

TA0241

USER MANUAL

**ARDUINO ULTRASONIC
SENSOR WITH BRACKET
AND SERVO**

Intro

An Ultrasonic Sensor with an acrylic Mounting Bracket and Tower Pro micro Servo kit. Great for robotic projects with obstacle avoidance or distance measuring functionality.



What you need:

- A 1.5 x 30 mm Screw Driver
- TA0241 Ultrasonic bracket with servo



Hardware installation



Package list:

1. Servo package (Tower Pro 9G servo and servo screws & horns)
2. Acrylic mounting brackets with protection cover
3. Ultrasonic sensor

Firstly remove the protection cover from the acrylic brackets

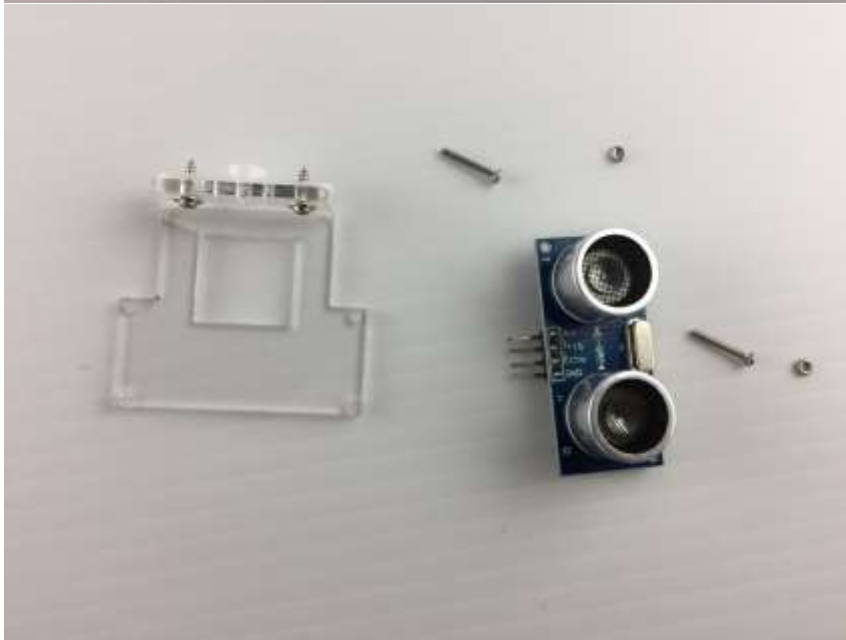
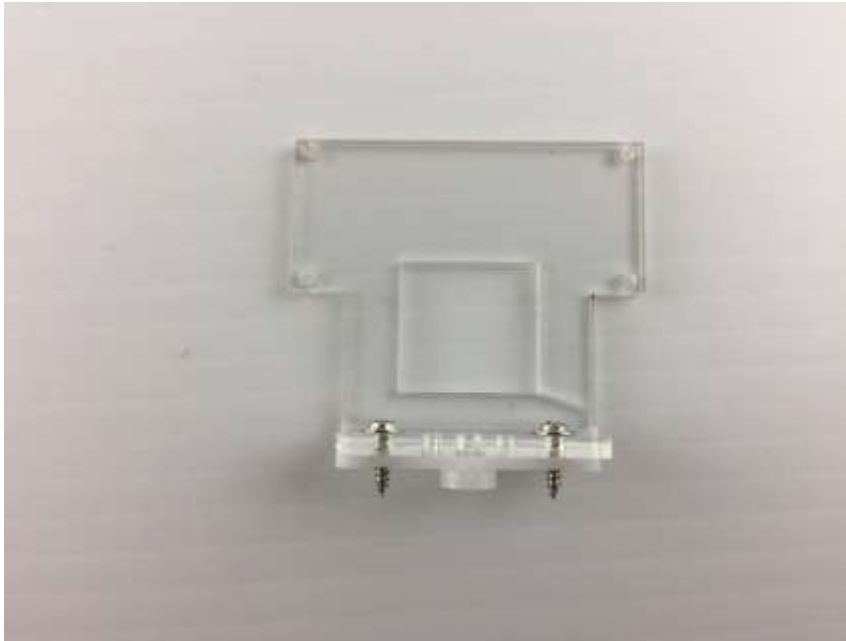


Then use two tapping screws from the servo package to secure the horn on the ultrasonic bracket



Look like this

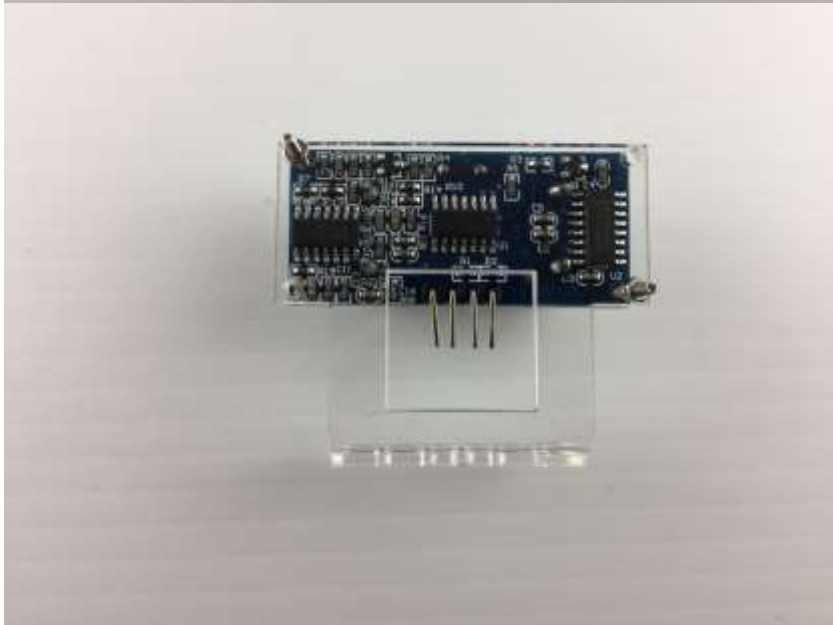


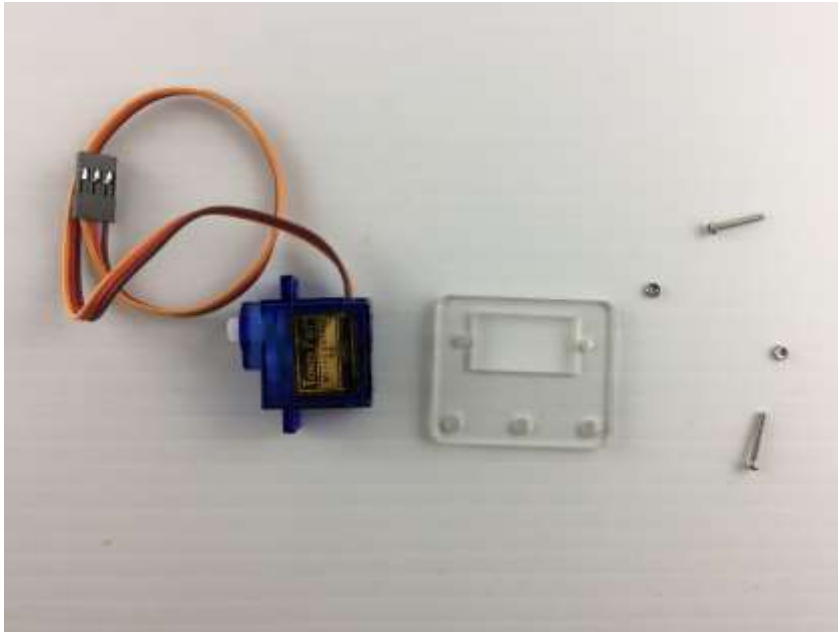


Next we use two long screws and nuts to mount the ultrasonic sensor on the bracket

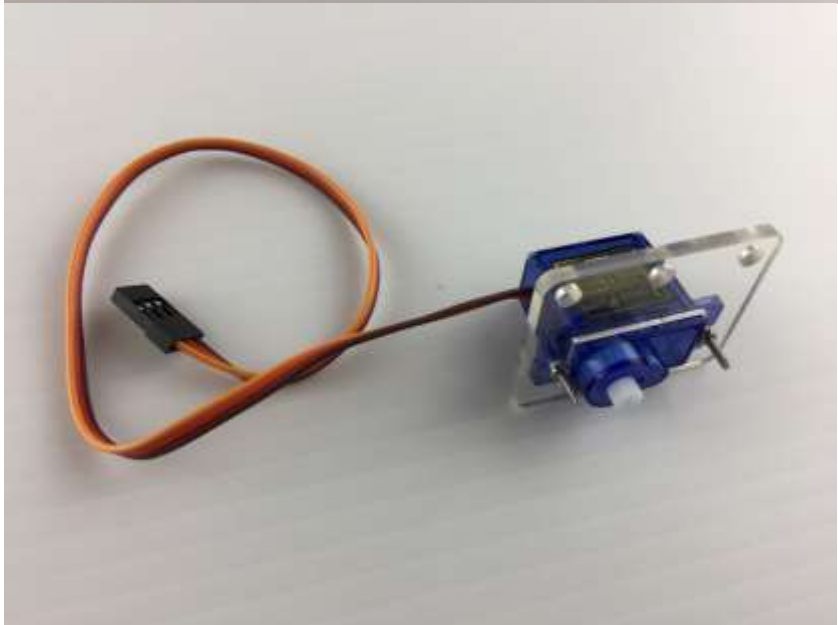


Look like this

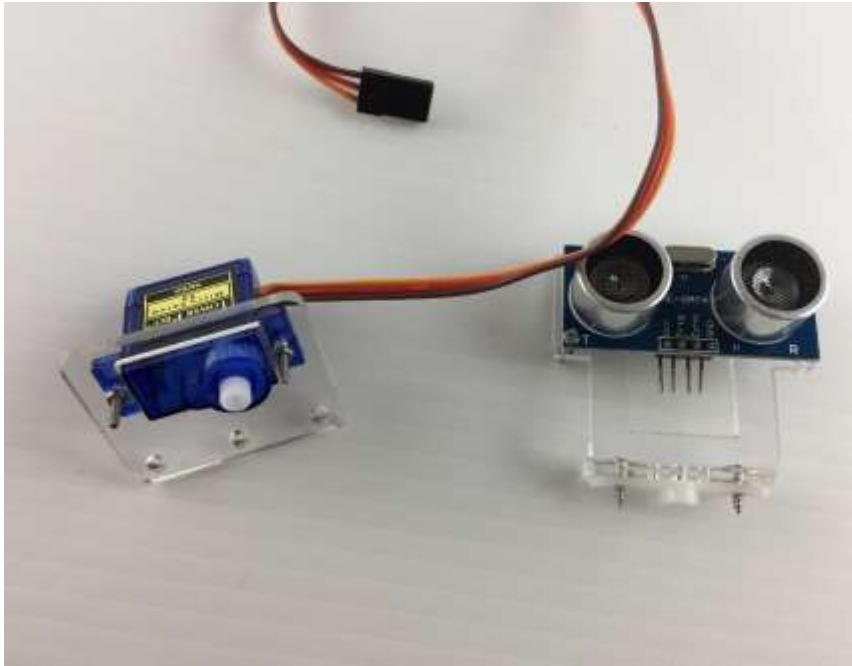




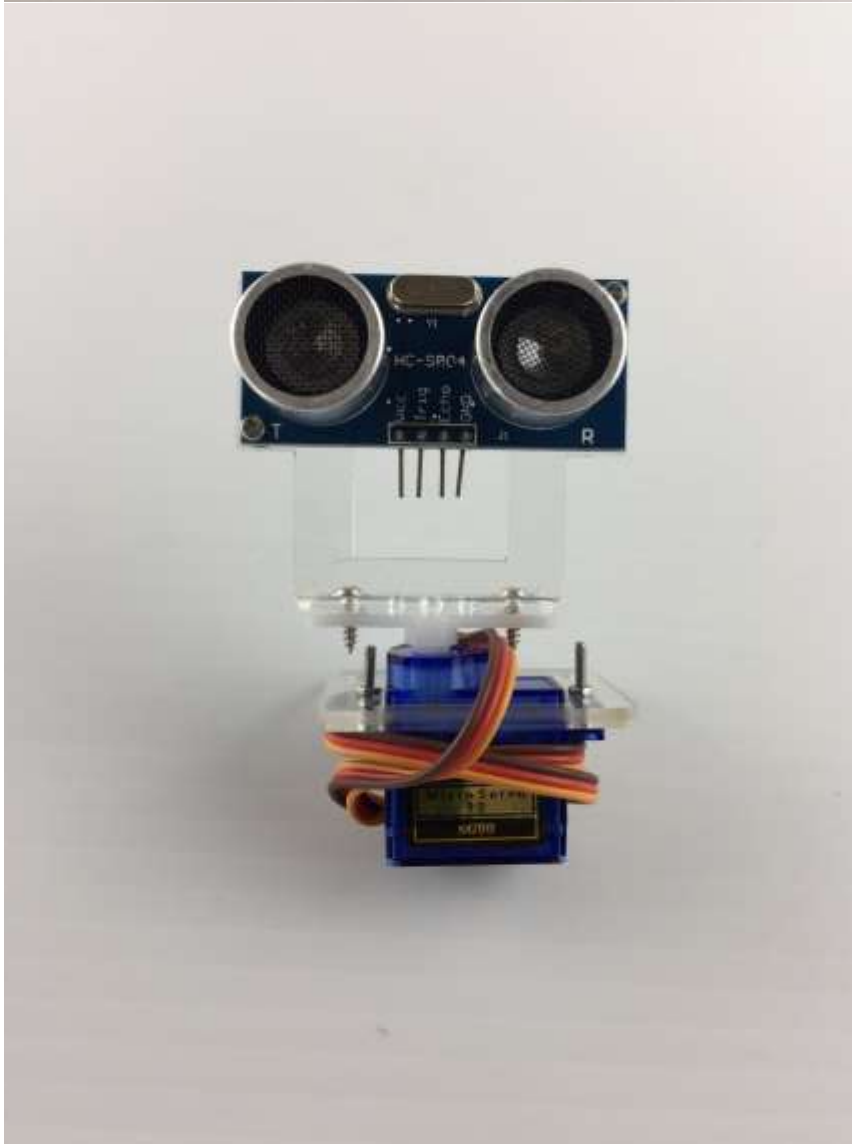
Then use two long screws and nuts to secure the servo on



Look like this



Lastly, combine two modules together



Look like this